

## Focused on Its Values

+ Kimley-Horn and Associates – a firm that provides engineering and land planning services – says it succeeds because it puts its clients and employees first.

“Growing professionally, having fun with our colleagues and finding satisfaction in our work are central to our way of life.”

> Kimley-Horn



Kimley-Horn provides services for road and bridge projects.

### Kimley-Horn and Associates Inc.

[www.kimley-horn.com](http://www.kimley-horn.com)

**Headquarters:** Raleigh, N.C.

**Service:** Engineering and land planning

> **Kimley-Horn and Associates Inc. is** known in the industry for being creative and bringing a sense of importance to every project.

“We take a clients’-eye view of our work, planning and designing to accomplish the client’s goal in the most effective manner,” the company says.

The engineering and land planning firm offers services in aviation, environment, intelligent transportation systems, forensic engineering, landscape architecture, land planning, transit, transportation, roads and bridges,

urban development, water resources and wireless communications.

It says it is one of the top firms in the industry because it puts its clients and employees first. “That intense focus on providing quality to the people we serve has made Kimley-Horn one of the nation’s top consulting firms in every discipline we practice,” the company says.

The company strives to provide an environment that will allow its employees to grow.

“Growing professionally, having fun with our colleagues and finding satisfaction in our work are central to our way of life,” it says.

Its other core values are honesty, integrity, ethics, exceptional client service, high expectations, sharing;

caring and sustained profitability, it says. “Our vision is long-term and our expectation is always to perform with quality, for the sake of both groups at the center of our firm,” Kimley-Horn says.

### Divisions’ Overview

The company’s divisions include:

\*Aviation – Kimley-Horn has completed \$618 million worth of construction projects ahead of schedule in a two-year period, the company says. It performed work at 42 of the top 100 commercial service airports and completed six major runway reconstruction projects with minimal interference to commercial operations, it says.

» *Environment* – The company has con-

ducted detailed wetland/stream assessments on multiple sites, from 300 to 22,000 acres, it says. It has also provided mitigation banking services for transportation departments, state environmental agencies, municipalities, developers and private mitigation bankers.

» *Forensic engineering* – Kimley-Horn says its licensed engineers and certified forensic specialists have years of practical experience and specialized training.

» *Intelligent transportation systems (ITS)* – The firm provides ITS architectures, systems engineering analyses, communications and ITS master planning, deployment plans, feasibility studies and conceptual designs, plans and specifications, system deployment, and integration and con-

struction administration and operational support.

» *Land development* – In 2007, *Engineering News-Record* (ENR) ranked the company No. 1 in general building-retail and No. 2 in general building- multi-unit residential. “We have an excellent track record for helping national clients implement fast-paced, highly-complex development programs,” it says.

» *Transit* – Kimley-Horn is known for intermodal and multimodal solutions, innovative funding and leading-edge implementation of ITS technologies. Its expertise includes bus system planning and light rail feasibility and.

» *Transportation* – The company says its engineers have developed thousands of miles of roadways.

» *Urban planning/landscape architecture*

– Its specialties include urban design, redevelopment, landscape architecture, community planning and construction.

» *Water resources* – Kimley-Horn can provide innovative strategies for alternative water supply from permitting through implementation.

» *Wireless communications* – The company has worked with wireless clients since 1996, and has completed more than 2,000 projects on more than 10,000 sites nationwide. “We managed contractors in 41 states to compile uniform information on 3,950 tower sites in less than three months,” it says. >>

*Core Engineering Group PLLC* frequently partners with Kimley-Horn in servicing the engineering needs of southwestern Arizona, providing conscientious, quality civil engineering and surveying services. For more information, visit [www.CoreEngineeringGroup.com](http://www.CoreEngineeringGroup.com) or call 928-344-5931.

## Our Services are:

Transportation Engineering  
 Land Development  
 Traffic Engineering  
 Civil Engineering  
 Land Surveying  
 Storm Water  
 Utilities  
 SWPPP

Serving  
 Arizona and  
 Southern California

**CORE**  
 ENGINEERING GROUP, PLLC  
 p 928.344.5931  
 f 928.344.5932  
 Core@core-e-g.com  
 www.CoreEngineeringGroup.com

**GEOTECHNICAL ENGINEERING  
 CONSTRUCTION INSPECTION  
 AND MATERIALS TESTING**

**ATL, INC.**  
 Excellence in Quality

Q.A./Q.C. ENGINEERING CONSULTANTS  
 GEO TECHNICAL • ENVIRONMENTAL • CIVIL • SPECIAL INSPECTIONS

602.241.1097 PHOENIX  
 www.ATL-Quality.com

PHOENIX TUCSON FLAGSTAFF GLOBE

**Continuous Growth**

Bob Kimley and Bill Horn are the company's founders. Horn worked at the North Carolina State Highway Commission and the city of Greensboro.

Kimley was an engineer and taught at the North Carolina State University. Ed Vick, one of Horn's former students, joined them a year later.

"Steady growth marked the firm's development through the 1970s and 1980s, with new disciplines being added as new specialists joined the firm," the company says.

"Those specialists – practice builders, we still call them – are given tremendous freedom and corporate support for building their own enterprise within the enterprise.

"Once a practice builder is on board,

he or she can draw on the full resources of the firm to make their practice work," it explains.

The company offered ownership opportunities to other members of the firm to make its value grow.

In the 1990s, Kimley-Horn began implementing annual and five-year goals to help fuel growth.

In 1990, the firm was ranked No. 105 by ENR, and in 2002, it jumped to No. 45.

"It became the nation's leading engineering firm for multi-family residential and retail properties," the company says. "The firm doubled in size twice in a decade."

Even as the company grew, it identified its core values and purpose, all of which will remain consistent, it stresses. "These values and purpose aren't new," the company says.

"In fact, they go all the way back to Bob Kimley and Bill Horn.

"Our circumstances change but our character remains the same."

**Award-Winning**

Kimley-Horn has received several recognitions.

For example:

» It was ranked No. 38 in *Fortune* magazine's 100 best companies to work for in 2008.

» California Construction gave it the Best of 2007 California Award for the Eastern Columbia Lofts.

» ENR named it No. 6 on its list of top green design firms, and No. 1 for retail and multi-unit residential green design, it says.

» ENR ranked the company No. 31 on its list of top-500 design firms. ●

**HOQUE & ASSOCIATES**

**Consulting Civil, Geotechnical, Materials Testing and Environmental Engineers**

Responsive, Cost Effective & Innovative Engineering Services

Hoque and Associates, Inc. (HA) is a consulting engineering firm specializing in geotechnical exploration, civil engineering, construction materials testing, environmental assessment and solid waste engineering.

**SERVICES**

- Geotechnical Engineering and Field Exploration
- Construction Materials Field and Laboratory Testing
- Vibration and Settlement Monitoring
- Gamma-Gamma Logging and Crosshole Sonic Logging
- Environmental Assessment
- Solid Waste Engineering
- Civil Design Services
- Land Reclamation & Restoration including some Brown Field

**HOQUE & ASSOCIATES**  
4325 South 34th Street, Phoenix, Arizona 85040  
Tel (480) 921-1368 • Fax (480) 921-0194 • www.hoqueandassociates.com

**BLANKENSHIP'S**  
*Universal Glass Co., Inc.*  
"Since 1949"

**COMMERCIAL**

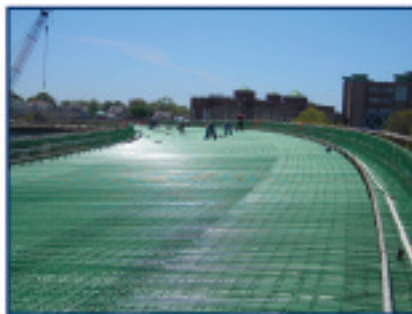
- Commercial Store Front
- Insulated Glass
- Plate, Window & Safety Glass
- Repair & Replacement
- Door Closers & Repairs
- Bullet-Resistant Glass
- Transaction Windows & Hardware
- Hurricane Panel Systems
- Plexiglas & Lexan

**RESIDENTIAL**

- Custom Mirror Walls / Mirrors
- Insulated Glass Replacements
- Shower & Tub Enclosures
- Furniture Tops
- Replace Broken Glass

**251-243-7106**

1305-B Springhill Ave. • Mobile, AL 36604



**Barker Steel Company, Inc.** is New England's oldest and largest fabricator of reinforcing steel.

We have the largest capacity of any reinforcing steel fabricator in the region combined with vast experience, the best possible equipment, and highly trained professionals. In addition we have a Building Products and Forming division which supplies any product needed to support concrete construction.



## **BARKER STEEL COMPANY, INC.**

55 Sumner Street | Milford, MA 01757  
 Phone: 800-370-0132 | Fax: 508-634-6881  
[www.barker.com](http://www.barker.com)

# SSI



**SOIL SYSTEMS, INC.** Archaeological Consultants

**Soil Systems, Inc. (SSI)** is a private cultural resources consulting firm that provides archaeological compliance and research to federal, state, municipal, and private clients in Arizona and the greater Southwest. The firm's projects have ranged from overviews, surveys, and testing on small and large-scale, multi-year data recovery projects, assisting clients to comply with the federal and state burial laws, and in developing interpretive and preservation plans.

**SSI** is committed to increasing our understanding of our country's prehistory, conducting quality research, and the preservation of our past. The company conducts innovative research within the parameters of professionally acceptable projects while working with clients and agencies to meet non-archaeological concerns and deadlines.

### **SOIL SYSTEMS, INC.**

1121 North Second Street, Phoenix, Arizona 85004  
 602.253.4938 | 602.253.0107 fax | [cobrdssl@aol.com](mailto:cobrdssl@aol.com)



## **Kenney Aerial Mapping, Inc.**

**Accurate, Comprehensive, Timely – Value**  
 Celebrating 45 Years of Business

We have three active Certified Photogrammetrists and a Registered Land Surveyor on staff ready to assist you with your next project.

Our project management team has over 300 years of aggregate experience.

Our Phoenix and Las Vegas Offices each have full map production capability and flight services.

We deliver the *Quality* and *Value* you need to make your project a success.

1125 Grand Ave Bldg 1  
 Phoenix, Arizona 85007  
 Phone: (602) 258-6471  
 Fax: (602) 340-1877

220 E. Horizon Drive Ste H  
 Henderson, Nevada 89015  
 Phone: (702) 260-3033  
 Fax: (702) 260-3035

Visit [www.kam-az.com](http://www.kam-az.com) for more information about our services and capabilities.